

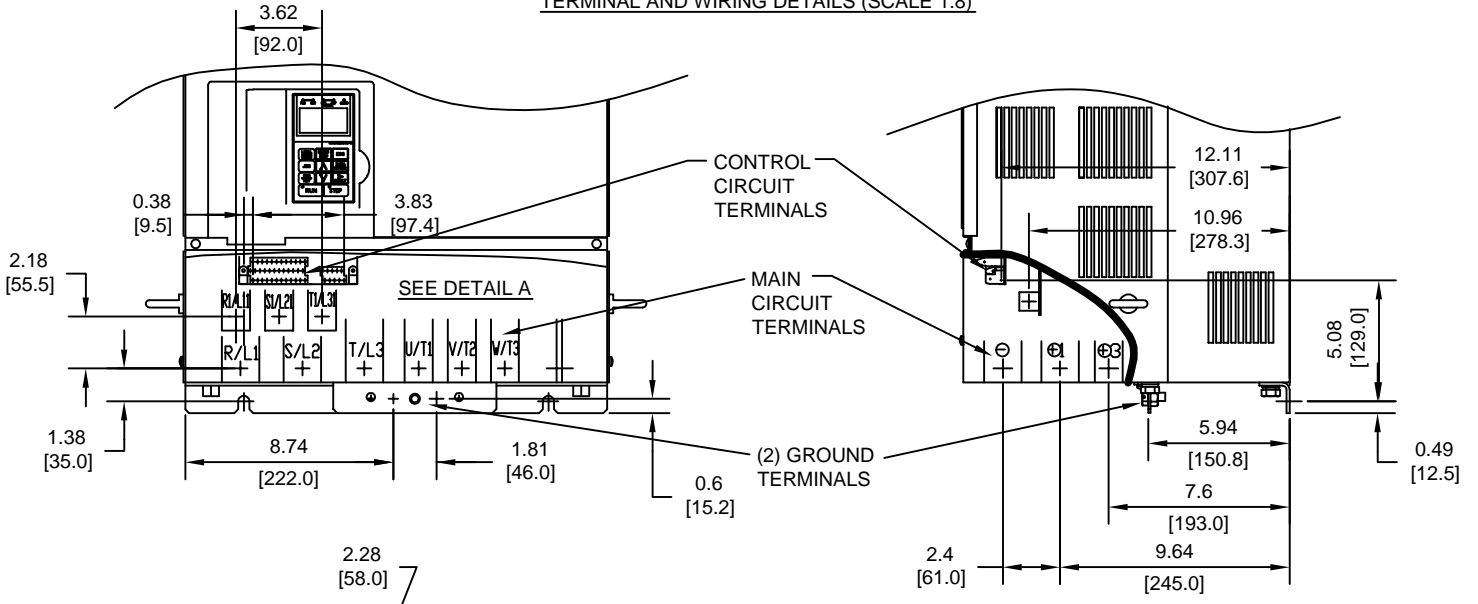
MODEL # CIMR-G7U	VOLTAGE (VAC)	OUTPUT CURRENT (A)	WEIGHT LBS (Kg)	HEAT LOSS (W)		
				INT	EXT	TOTAL
2045	208/230	183	189 (86)	510	1291	1801
2055		224	191 (87)	607	1474	2081
4055	480	128	198 (90)	488	1239	1727
4075		165	200 (91)	597	1554	2151

INT=INTERNAL COMPONENTS  
EXT=EXTERNAL HEATSINK

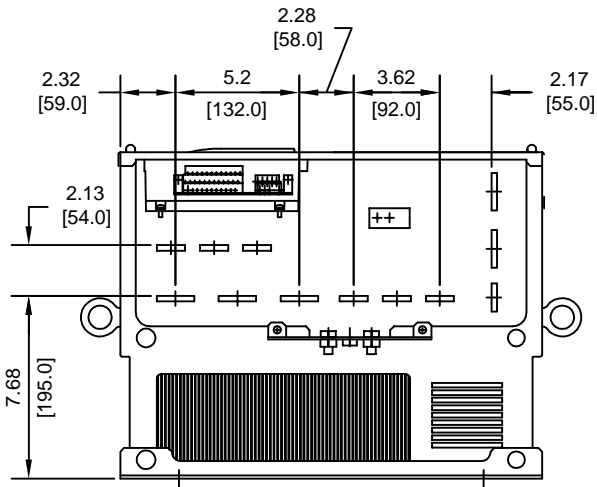
FOR ADDITIONAL DETAILS AND SPECIFICATIONS, CONSULT MANUAL

TOLERANCES/REFERENCES: -	<p><b>YASKAWA</b> A World of Automation Solutions™</p> <p><b>YASKAWA ELECTRIC AMERICA, INC.</b> Corporate Headquarters 2121 Norman Drive South Waukegan, IL 60085 1-800-YASKAWA http://www.yaskawa.com</p>	DRAWN: J. MATTAS	DATE 2-20-04	TITLE: G7 DIMENSION DRAWING
		CHECKED: E. KU	DATE 4-4-04	FRAME SIZE 10
UNITS: IN[mm]	SCALE: 1:10	TECH: J. CAIRO	DATE 4-2-04	IP00 ENCLOSURE
		APPROVED: T. SASADA	DATE 4-7-04	G7U2045 TO 2055, 4055 TO 4075
		ORIGINAL DESIGN: -	DATE -	SIZE A
				REVISION -
				PAGE 1 of 3
				DRAWING #: <b>DD.G7.FR10.IP00.01</b>

TERMINAL AND WIRING DETAILS (SCALE 1:8)

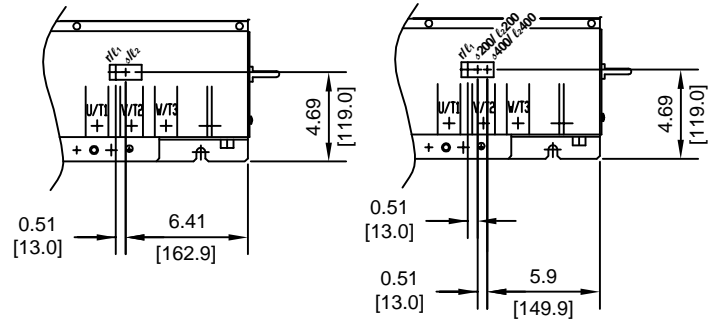


DETAIL A (SCALE 1:10)



MODELS G7U2045 AND G7U2055

MODELS G7U4055 AND G7U4075



TERMINAL AND WIRE SPECIFICATIONS FOR MAIN CIRCUIT AND GROUND

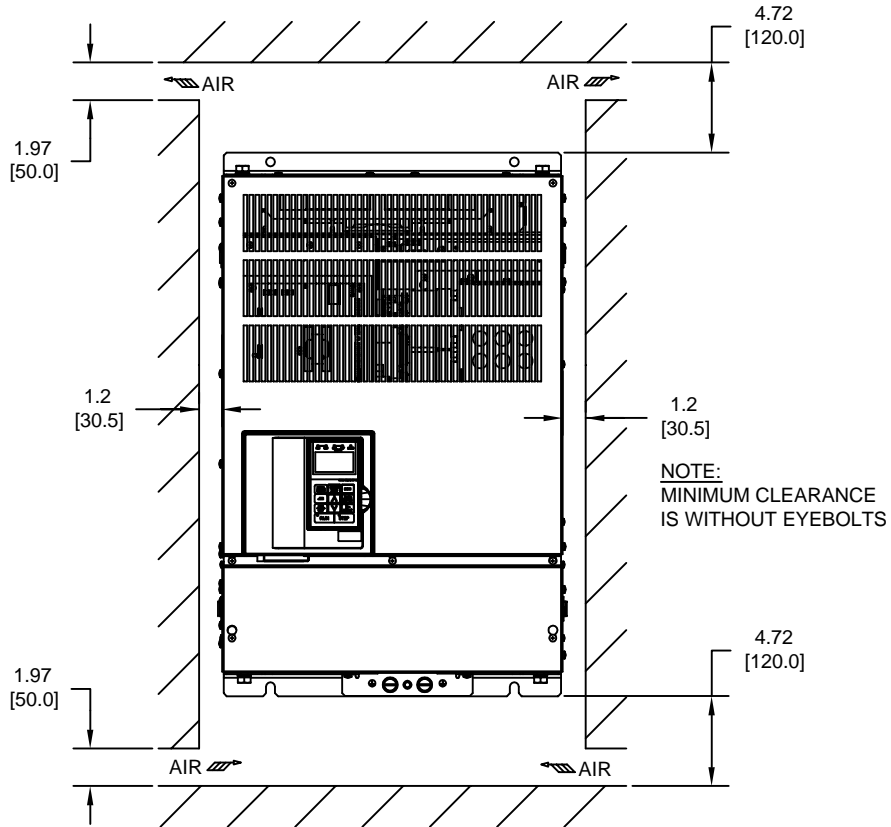
MODEL # CIMR-G7U	TERMINAL SYMBOL	TERMINAL SCREW	CLAMPING TORQUE lb.in.(N.m.)
2045	R/L1, S/L2, T/L3, ⊙, ⊕1, ⊕, U/T1, V/T2, W/T3, R1/L11, S1/L21, T1/L31	M10	155 TO 198 (17.6 TO 22.5)
	⊕3	M8	78.0 TO 95.0 (8.8 TO 10.8)
	r/l1, s/l2	M4	11.4 TO 12.3 (1.3 TO 1.4)
2055	R/L1, S/L2, T/L3, U/T1, V/T2, W/T3, R1/L11, S1/L21, T1/L31	M10	155 TO 198 (17.6 TO 22.5)
	⊕3	M8	78.0 TO 95.0 (8.8 TO 10.8)
	⊙, ⊕1, ⊕	M12	277 TO 345 (31.4 TO 39.2)
4055	R/L1, S/L2, T/L3, U/T1, V/T2, W/T3, R1/L11, S1/L21, T1/L31	M10	155 TO 198 (17.6 TO 22.5)
	⊕3	M8	78.0 TO 95.0 (8.8 TO 10.8)
	r/l1, s200/l2200, s400/l2400	M4	11.4 TO 12.3 (1.3 TO 1.4)
4075	R/L1, S/L2, T/L3, ⊙, ⊕1, ⊕, U/T1, V/T2, W/T3, R1/L11, S1/L21, T1/L31	M10	155 TO 198 (17.6 TO 22.5)
	⊕3	M8	78.0 TO 95.0 (8.8 TO 10.8)
	r/l1, s200/l2200, s400/l2400	M4	11.4 TO 12.3 (1.3 TO 1.4)

NOTE: REFER TO APPLICABLE CODES FOR PROPER WIRE TYPE AND SIZE

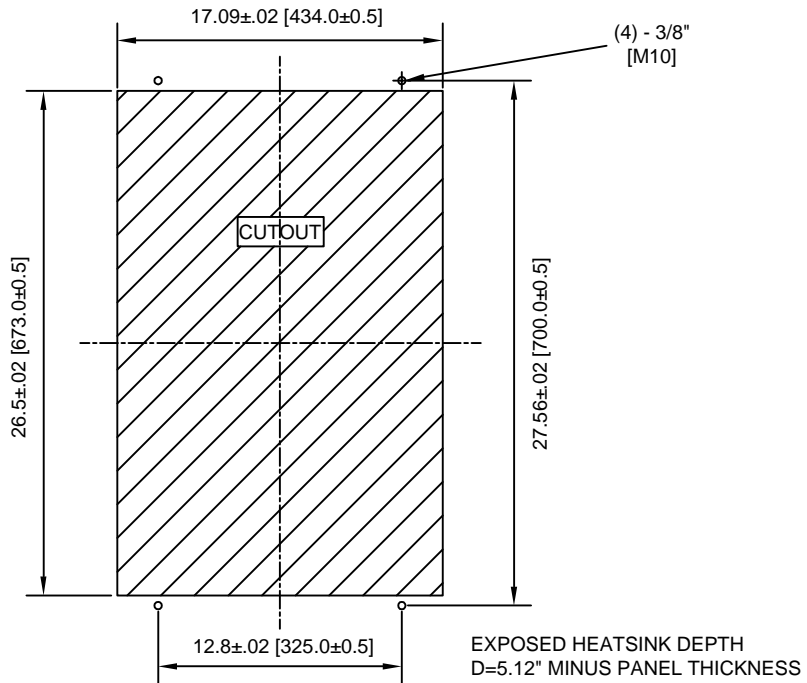
FOR ADDITIONAL DETAILS AND SPECIFICATIONS, CONSULT MANUAL

TOLERANCES/REFERENCES: - - - - -	<p><b>YASKAWA</b> A World of Automation Solutions™</p> <p>YASKAWA ELECTRIC AMERICA, INC. Corporate Headquarters 2121 Norman Drive South Waukegan, IL 60085 1-800-YASKAWA http://www.yaskawa.com</p>	DRAWN: J. MATTAS	DATE 2-20-04	TITLE: G7 DIMENSION DRAWING		
		CHECKED: E. KU	DATE 4-4-04	FRAME SIZE 10		
		TECH: J. CAIRO	DATE 4-2-04	IP00 ENCLOSURE		
		APPROVED: T. SASADA	DATE 4-7-04	G7U2045 TO 2055, 4055 TO 4075		
UNITS: IN[mm]	SCALE: BY VIEW	ORIGINAL DESIGN: -	DATE -	SIZE A	REVISION -	PAGE 2 of 3
				DRAWING #: <b>DD.G7.FR10.IP00.01</b>		

MINIMUM INSTALLATION CLEARANCES (SCALE 1:10)



PANEL CUTOUT FOR EXTERNAL HEATSINK MOUNTING CONFIGURATION (SCALE 1:10)



FOR ADDITIONAL DETAILS AND SPECIFICATIONS, CONSULT MANUAL

TOLERANCES/REFERENCES: -		 <b>YASKAWA</b> <i>A World of Automation Solutions™</i> <b>YASKAWA ELECTRIC AMERICA, INC.</b> Corporate Headquarters 2121 Norman Drive South Waukegan, IL 60085 1-800-YASKAWA <a href="http://www.yaskawa.com">http://www.yaskawa.com</a>	DRAWN: <b>J. MATTAS</b> DATE: <b>2-20-04</b>	TITLE: <b>G7 DIMENSION DRAWING</b>	
UNITS: IN[mm]	SCALE: BY VIEW		CHECKED: <b>E. KU</b> DATE: <b>4-4-04</b>	FRAME SIZE 10 IP00 ENCLOSURE G7U2045 TO 2055, 4055 TO 4075	
		TECH: <b>J. CAIRO</b> DATE: <b>4-2-04</b>	APPROVED: <b>T. SASADA</b> DATE: <b>4-7-04</b>	SIZE: <b>A</b>	REVISION: -
		ORIGINAL DESIGN: -	DATE: -	PAGE: 3 of 3	DRAWING #: <b>DD.G7.FR10.IP00.01</b>